

What to Expect During Our Site Visit

This document contains information on what it is that the residential sales person will need to inspect during the scheduled site visit and why, as well as a few key terms to prepare you for the visit.

What will we need to see?

- 1. Panel Board:** We will be looking to see whether or not we can tie the PV system into the existing panel.
- 2. Roof Structure (if accessible):** We will also need to take a look at the rafter size and spacing of the existing roof structure to assess whether or not the roof is capable of handling the additional 3-4lbs/ft a solar system provides.
- 3. Electric Bill:** We will need a **copy of a recent electric bill** so that we can assess electricity usage at your home. This helps determine the appropriate system size for your project.
- 4. Exterior roof (if accessible):** Ideally, we would like to get up on your roof and take a solar access reading from the surface. If this is not possible we are equipped with an extension pole for the SunEye 210 solar access meter.

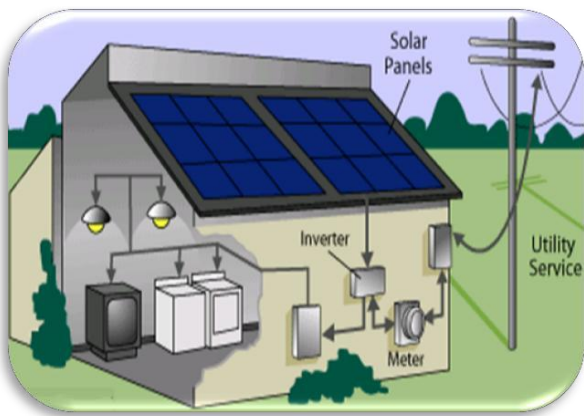


Key Terms for the Site Visit

- 1. Net Metering:** Under the Green Communities Act, utility companies must compensate customers for excess electricity at the retail rate rather than the lower wholesale rate. Your meter will be capable of spinning forwards (when you are using electricity) and backwards (when your PV system is producing electricity).



How Solar Systems Work:



- 2. Inverter:** Converts the variable direct current (DC) output of a PV solar panel into a utility frequency alternating current (AC) that can be fed into a commercial electrical grid. It is a critical component in a PV system, allowing the use of ordinary commercial appliances.
- 3. SREC:** Stands for *Solar Renewable Energy Certificate*. For every 1,000kWh's (total) your system produces you will be eligible for 1 SREC. Each certificate is traded on a market during a quarterly auction with a current floor price of \$0.285/kWh.